



Cable ID: SFTP CAT6A 0.56 LSZH

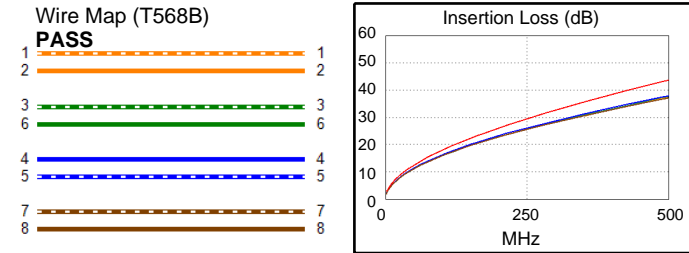
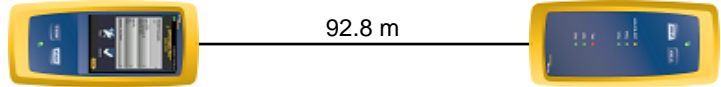
Test Limit: TIA Cat 6A Perm. Link
Limits Version: V7.6
Date / Time: 10/19/2025 01:47:49 PM
Headroom 5.3 dB (NEXT 3,6-4,5)
Cable Type: Cat 6A S/FTP
NVP: 77.0%

Main: Versiv
S/N: 21200117
Software Version: V6.6 Build 2
Calibration Date: 10/10/2025
Adapter: DSX-5000 (DSX-PLA004)
S/N: 21331545

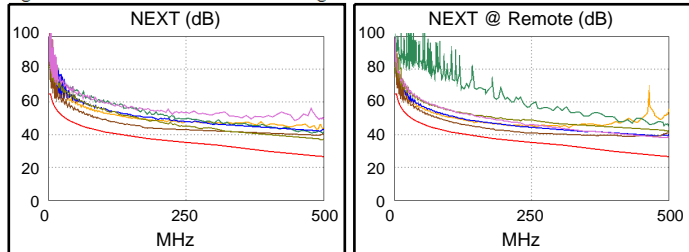
Test Summary: PASS

Remote: Versiv
S/N: 21200257
Software Version: V6.6 Build 2
Calibration Date: 10/10/2025
Adapter: DSX-5000R (DSX-PLA004)
S/N: 21331546

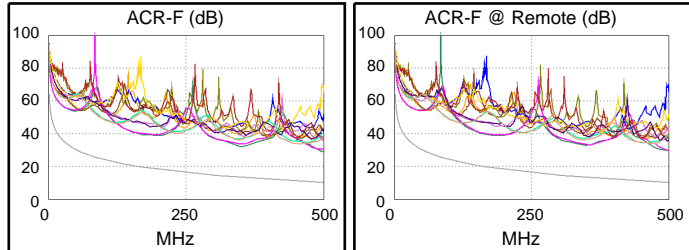
Length (m), Limit 90.0	[Pair 7,8]	92.8
Prop. Delay (ns), Limit 498	[Pair 4,5]	411
Delay Skew (ns), Limit 44	[Pair 4,5]	9
Resistance (ohms)	[Pair 4,5]	13.22
Insertion Loss Margin (dB)	[Pair 4,5]	5.8
Frequency (MHz)	[Pair 4,5]	500.0
Limit (dB)	[Pair 4,5]	43.8



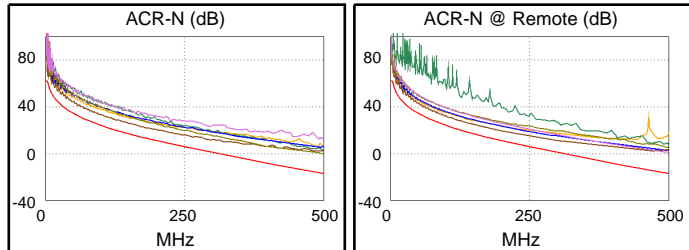
	Worst Case Margin		Worst Case Value	
PASS	MAIN	SR	MAIN	SR
Worst Pair	3,6-4,5	3,6-4,5	3,6-7,8	4,5-7,8
NEXT (dB)	5.7	5.3	10.3	10.8
Freq. (MHz)	286.0	242.5	497.0	479.0
Limit (dB)	34.4	35.6	26.7	27.3
Worst Pair	3,6	3,6	3,6	7,8
PS NEXT (dB)	6.3	5.9	11.0	11.1
Freq. (MHz)	277.0	183.0	498.0	497.0
Limit (dB)	32.0	35.0	23.8	23.8



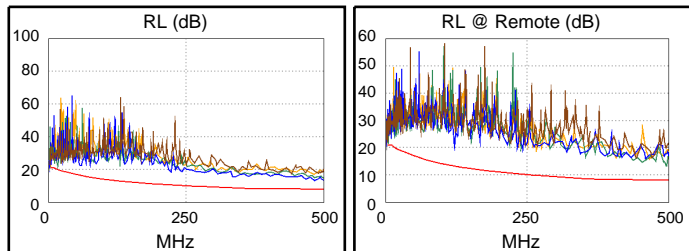
PASS	MAIN	SR	MAIN	SR
Worst Pair	1,2-4,5	1,2-4,5	1,2-4,5	4,5-1,2
ACR-F (dB)	18.7	19.3	18.8	19.5
Freq. (MHz)	351.0	344.0	499.0	499.0
Limit (dB)	13.3	13.5	10.2	10.2
Worst Pair	4,5	4,5	4,5	4,5
PS ACR-F (dB)	20.0	20.2	20.7	21.5
Freq. (MHz)	349.0	1.3	498.0	499.0
Limit (dB)	10.3	59.3	7.2	7.2



N/A	MAIN	SR	MAIN	SR
Worst Pair	3,6-4,5	3,6-4,5	3,6-7,8	4,5-7,8
ACR-N (dB)	8.6	7.7	17.1	18.3
Freq. (MHz)	34.3	71.3	500.0	500.0
Limit (dB)	39.1	29.2	-17.1	-17.1
Worst Pair	3,6	3,6	3,6	4,5
PS ACR-N (dB)	9.4	8.2	16.9	17.8
Freq. (MHz)	14.6	95.8	497.0	500.0
Limit (dB)	46.2	22.1	-19.7	-20.0



PASS	MAIN	SR	MAIN	SR
Worst Pair	3,6	3,6	4,5	3,6
RL (dB)	2.1	2.4	5.1	5.2
Freq. (MHz)	16.8	4.0	482.0	496.0
Limit (dB)	19.9	21.0	8.0	8.0



Compliant Network Standards:
 10BASE-T 100BASE-TX 100BASE-T4
 100BASE-T 2.5GBASE-T
 10GBASE-T ATM-25 ATM-51
 ATM-155 100VG-AnyLan TR-4
 TR-16 Active TR-16 Passive